

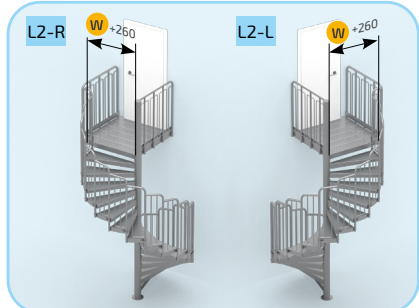
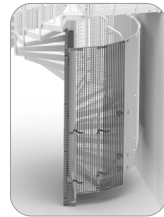
Hot dip galvanized



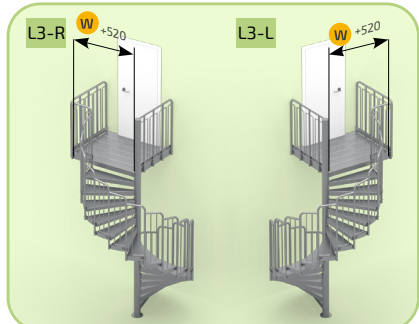
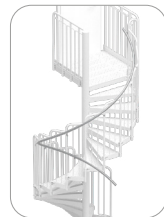
Stair radius  
900, 1000, 1100 mm



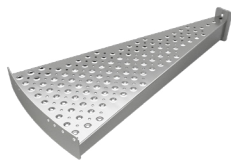
Cage from press-welding grating



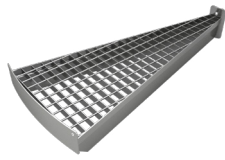
Additional internal handrail



Available step filling options:



Perforated grating- HDG

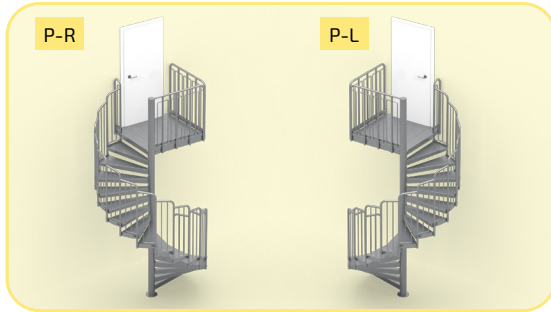
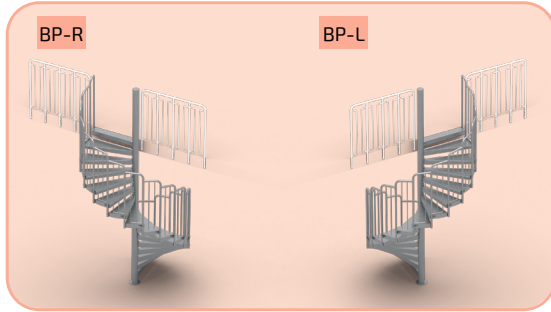


Press-welding grating HDG

Variant	L1-RIGHT / L1-LEFT						L2-RIGHT / L2-LEFT						L3-RIGHT / L3-LEFT						Additional internal handrail H-900 mm			Cage from press-welding grating		
	Profiled grating			Welded grating			Profiled grating			Welded grating			Profiled grating			Welded grating			900	1000	1100	900	1000	1100
	900	1000	1100	900	1000	1100	900	1000	1100	900	1000	1100	900	1000	1100	900	1000	1100	900	1000	1100	900	1000	1100
Number of heights	2	781	830	893	744	800	856	953	1005	1077	885	952	1015	1041	1103	1177	966	1036	1103	11	-	-	-	
	3	887	942	1010	853	914	983	1059	1117	1194	993	1066	1143	1147	1214	1294	1075	1150	1230	20	-	-	-	
	4	985	1045	1119	953	1021	1102	1157	1220	1303	1094	1173	1262	1245	1318	1403	1175	1257	1350	21	-	-	-	
	5	1083	1149	1228	1054	1128	1222	1255	1324	1412	1195	1280	1382	1343	1421	1512	1276	1364	1469	30	-	-	-	
	6	1181	1252	1337	1155	1235	1341	1353	1427	1521	1295	1387	1501	1441	1525	1621	1377	1471	1589	31	-	-	-	
	7	1287	1363	1454	1263	1349	1469	1459	1539	1638	1404	1501	1629	1547	1636	1738	1485	1585	1716	40	-	-	-	
	8	1385	1467	1563	1364	1456	1588	1557	1642	1747	1505	1608	1748	1645	1739	1847	1586	1692	1835	41	-	-	-	
	9	1483	1570	1672	1465	1563	1708	1655	1746	1856	1605	1715	1868	1743	1843	1957	1687	1799	1955	51	-	-	-	
	10	1581	1674	1782	1565	1670	1827	1753	1849	1966	1706	1822	1987	1841	1946	2066	1787	1906	2074	52	-	-	-	
	11	1679	1777	1891	1666	1777	1947	1851	1953	2075	1807	1929	2107	1939	2050	2175	1888	2013	2194	61	2010	2048	2086	
	12	1785	1889	2008	1775	1891	2074	1957	2064	2192	1915	2043	2234	2045	2161	2292	1997	2127	2321	62	2010	2048	2086	
	13	1883	1992	2117	1875	1998	2194	2055	2167	2301	2016	2150	2353	2143	2265	2401	2097	2234	2441	72	2010	2048	2086	
	14	1981	2096	2226	1976	2105	2313	2153	2271	2410	2117	2257	2473	2241	2368	2510	2198	2341	2560	73	2010	2048	2086	
	15	2080	2199	2335	2077	2212	2433	2251	2374	2519	2217	2364	2592	2340	2472	2619	2299	2448	2680	82	2010	2048	2086	
	16	2178	2303	2444	2177	2319	2552	2349	2478	2628	2318	2470	2712	2438	2575	2728	2399	2555	2799	83	2010	2048	2086	
	17	2283	2414	2561	2286	2433	2679	2455	2589	2745	2427	2585	2839	2543	2686	2845	2508	2669	2927	92	2010	2048	2086	
	18	2382	2517	2670	2387	2540	2799	2553	2693	2854	2527	2692	2959	2642	2790	2955	2609	2776	3046	93	2010	2048	2086	
	19	2480	2621	2780	2487	2647	2919	2651	2796	2964	2628	2799	3078	2740	2893	3064	2709	2883	3166	103	2010	2048	2086	
	20	2578	2724	2889	2588	2754	3038	2749	2900	3073	2729	2906	3198	2838	2997	3173	2810	2990	3285	104	2010	2048	2086	
	21	2676	2828	2998	2689	2861	3158	2847	3003	3182	2829	3012	3317	2936	3100	3282	2911	3096	3405	113	2010	2048	2086	
	22	2782	2939	3115	2797	2975	3285	2953	3114	3299	2938	3127	3445	3042	3212	3399	3019	3211	3532	114	2010	2048	2086	
	23	2880	3043	3224	2898	3082	3404	3051	3218	3408	3039	3234	3564	3140	3315	3508	3120	3318	3651	123	2010	2048	2086	
	24	2978	3146	3333	2999	3189	3524	3149	3321	3517	3139	3341	3684	3238	3419	3617	3221	3425	3771	124	2010	2048	2086	
	25	3076	3250	3442	3099	3296	3643	3248	3425	3626	3240	3448	3803	3336	3522	3726	3321	3532	3891	134	2010	2048	2086	
	26	3174	3353	3551	3200	3403	3763	3346	3528	3735	3341	3554	3923	3434	3626	3836	3422	3638	4010	135	2010	2048	2086	
	27	3280	3465	3668	3308	3517	3890	3451	3640	3852	3449	3669	4050	3540	3737	3952	3530	3753	4137	144	2010	2048	2086	
	28	3378	3568	3777	3409	3624	4010	3550	3743	3961	3550	3776	4170	3638	3841	4062	3631	3860	4257	145	2010	2048	2086	
	29	3476	3672	3887	3510	3731	4129	3648	3847	4071	3651	3883	4289	3736	3944	4171	3732	3967	4376	154	2010	2048	2086	
	30	3574	3775	3996	3611	3838	4249	3746	3950	4180	3751	3989	4409	3834	4048	4280	3833	4073	4496	156	2010	2048	2086	
	31	3658	3865	4091	3698	3931	4355	3830	4040	4275	3838	4083	4514	3919	4137	4375	3920	4167	4602	165	2010	2048	2086	
	32	3751	3962	4194	3792	4032	4468	3922	4138	4378	3933	4183	4628	4011	4235	4479	4014	4267	4715	166	2010	2048	2086	
	33	3835	4052	4290	3879	4125	4574	4006	4227	4474	4020	4276	4734	4095	4325	4574	4101	4360	4821	175	2010	2048	2086	
	34	3919	4142	4385	3966	4218	4680	4091	4317	4569	4107	4369	4839	4179	4414	4669	4188	4453	4927	176	2010	2048	2086	
	35	4003	4231	4480	4053	4311	4785	4175	4407	4664	4194	4462	4945	4263	4504	4765	4275	4546	5032	186	2010	2048	2086	
	36	4088	4321	4576	4140	4404	4891	4259	4496	4760	4281	4555	5051	4348	4594	4860	4362	4639	5138	187	2010	2048	2086	
	37	4180	4418	4679	4234	4504	5004	4351	4594	4863	4375	4656	5164	4440	4691	4963	4456	4740	5251	196	2010	2048	2086	

LOWER PRICES UP TO 22%

Nett prices in GBP. Price list valid from 01.02.2023 until further notice.



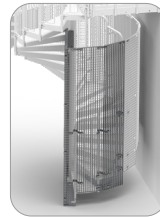
Hot dip galvanized



Stair radius  
900, 1000, 1100 mm



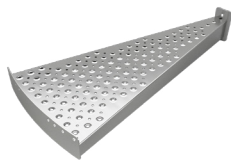
Cage from press-welding grating



Additional internal handrail



Available step filling options:



Profiled grating- HDG



Press-welding grating HDG

Variant	BP-RIGHT / BP-LEFT						P-RIGHT / P-LEFT						Additional internal handrail H-900 mm			Cage from press-welding grating		
	Profiled grating			Welded grating			Profiled grating			Welded grating			900	1000	1100	900	1000	1100
Stair radius	900	1000	1100	900	1000	1100	900	1000	1100	900	1000	1100	900	1000	1100	900	1000	1100
Number of heights	2	344	358	371	340	353	372	979	1032	1103	911	978	1042	11	-	-	-	
	3	453	471	490	451	470	502	1087	1145	1222	1022	1095	1171	20	-	-	-	
	4	551	575	599	551	577	621	1185	1249	1332	1123	1202	1291	21	-	-	-	
	5	649	678	708	652	684	741	1283	1352	1441	1223	1308	1410	30	-	-	-	
	6	747	782	817	753	790	860	1381	1456	1550	1324	1415	1530	31	-	-	-	
	7	853	893	934	861	905	987	1487	1567	1667	1433	1530	1657	40	-	-	-	
	8	951	997	1043	962	1012	1107	1585	1671	1776	1533	1637	1777	41	-	-	-	
	9	1049	1100	1152	1063	1119	1226	1683	1774	1885	1634	1744	1896	51	-	-	-	
	10	1147	1204	1262	1163	1226	1346	1782	1878	1994	1735	1850	2016	52	-	-	-	
	11	1245	1307	1371	1264	1332	1465	1880	1981	2103	1835	1957	2135	61	2010	2048	2086	
	12	1351	1419	1488	1372	1447	1593	1986	2093	2220	1944	2072	2263	62	2010	2048	2086	
	13	1449	1522	1597	1473	1554	1712	2084	2196	2330	2045	2179	2382	72	2010	2048	2086	
	14	1547	1626	1706	1574	1661	1832	2182	2300	2439	2145	2286	2502	73	2010	2048	2086	
	15	1645	1729	1815	1675	1767	1951	2280	2403	2548	2246	2392	2621	82	2010	2048	2086	
	16	1743	1833	1924	1775	1874	2071	2378	2507	2657	2347	2499	2741	83	2010	2048	2086	
	17	1849	1944	2041	1884	1989	2198	2484	2618	2774	2455	2614	2868	92	2010	2048	2086	
	18	1947	2047	2150	1984	2096	2318	2582	2721	2883	2556	2721	2988	93	2010	2048	2086	
	19	2045	2151	2259	2085	2203	2437	2680	2825	2992	2657	2827	3107	103	2010	2048	2086	
	20	2143	2254	2369	2186	2309	2557	2778	2928	3101	2757	2934	3227	104	2010	2048	2086	
	21	2241	2358	2478	2287	2416	2676	2876	3032	3211	2858	3041	3346	113	2010	2048	2086	
	22	2347	2469	2595	2395	2531	2804	2982	3143	3327	2967	3156	3473	114	2010	2048	2086	
	23	2445	2573	2704	2496	2638	2923	3080	3247	3437	3067	3263	3593	123	2010	2048	2086	
	24	2543	2676	2813	2596	2745	3043	3178	3350	3546	3168	3369	3712	124	2010	2048	2086	
	25	2641	2780	2922	2697	2851	3162	3276	3454	3655	3269	3476	3832	134	2010	2048	2086	
	26	2740	2883	3031	2798	2958	3282	3374	3557	3764	3369	3583	3951	135	2010	2048	2086	
	27	2845	2994	3148	2906	3073	3409	3480	3668	3881	3478	3698	4079	144	2010	2048	2086	
	28	2944	3098	3257	3007	3180	3528	3578	3772	3990	3579	3804	4198	145	2010	2048	2086	
	29	3042	3201	3367	3108	3286	3648	3676	3875	4099	3679	3911	4318	154	2010	2048	2086	
	30	3140	3305	3476	3208	3393	3767	3774	3979	4208	3780	4018	4437	156	2010	2048	2086	
	31	3224	3395	3571	3295	3486	3873	3859	4069	4304	3867	4111	4543	165	2010	2048	2086	
	32	3316	3492	3674	3390	3587	3987	3951	4166	4407	3962	4212	4657	166	2010	2048	2086	
	33	3400	3582	3770	3477	3680	4092	4035	4256	4502	4049	4305	4762	175	2010	2048	2086	
	34	3485	3672	3865	3564	3773	4198	4119	4346	4598	4135	4398	4868	176	2010	2048	2086	
	35	3569	3761	3960	3651	3866	4304	4204	4435	4693	4222	4491	4974	186	2010	2048	2086	
36	3653	3851	4056	3738	3959	4410	4288	4525	4788	4309	4584	5079	187	2010	2048	2086		
37	3745	3948	4159	3832	4060	4523	4380	4622	4891	4404	4685	5193	196	2010	2048	2086		

**LOWER PRICES UP TO 22%**

Nett prices in GBP. Price list valid from 01.02.2023 until further notice.