

LOWER PRICES UP TO 33%

PRICE LIST IN GBP



PAGE 2



PAGE 3



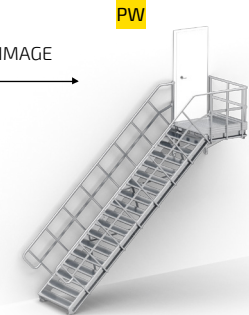
PAGE 4



PAGE 4

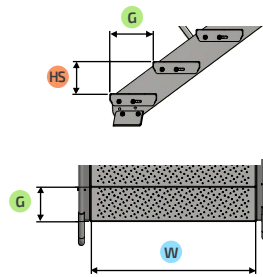
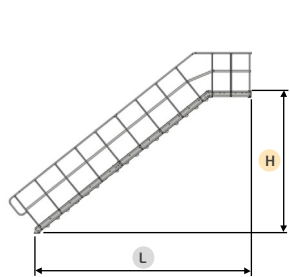


PAGE 4

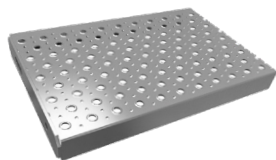


PAGE 4

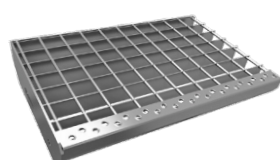
For variants **BP**, **P** there is a possibility to install one-sided railing.



Available step filling options:



Profiled grating - HDG



Welded grating - HDG

Additional option - internal handrail



Internal stairs
ZN



External stairs
ZN + RAL 7040



Number of steps	TYPE 33								TYPE 37								TYPE 40								
	G = 260 mm				HS = 171 mm				G = 250 mm				HS = 185,5 mm				G = 238 mm				HS = 200 mm				
	Variant	BP	P	LS/PS	LW/PW	Variant	BP	P	LS/PS	LW/PW	Variant	BP	P	LS/PS	LW/PW	Variant	BP	P	LS/PS	LW/PW					
	W →	800	800	1100	800	1100	800	1100	800	1100	800	1100	800	1100	800	1100	800	1100	800	1100	800	1100			
	H ↓	1200	1000	1200	1000	1200	1000	1200	1000	1200	1000	1200	1000	1200	1000	1200	1000	1200	1000	1200	1000	1200			
		L ↓				L ↓				L ↓				L ↓				L ↓							
2		330	537	1340	1610	1390	1660	-	-	370	515	1318	1588	1368	1638	-	-	390	537	1340	1610	1390	1660	-	-
3		500	797	1600	1870	1650	1920	-	-	560	767	1570	1840	1620	1890	-	-	590	767	1570	1840	1620	1890	-	-
4		670	1057	1860	2130	1910	2180	-	-	740	1017	1820	2090	1870	2140	-	-	790	1007	1810	2080	1860	2130	-	-
5		840	1317	2120	2390	2170	2440	-	-	930	1267	2070	2340	2120	2390	2120	2390	990	1247	2050	2320	2100	2370	2100	2370
6		1010	1577	2380	2650	2430	2700	2430	2700	1110	1507	2310	2580	2360	2630	2360	2630	1190	1487	2290	2560	2340	2610	2340	2610
7		1180	1837	2640	2910	2690	2960	2690	2960	1300	1757	2560	2830	2610	2880	2610	2880	1390	1717	2520	2790	2570	2840	2570	2840
8		1360	2097	2900	3170	2950	3220	2950	3220	1490	2007	2810	3080	2860	3130	2860	3130	1590	1957	2760	3030	2810	3080	2810	3080
9		1530	2347	3150	3420	3200	3470	3200	3470	1670	2257	3060	3330	3110	3380	3110	3380	1790	2197	3000	3270	3050	3320	3050	3320
10		1700	2607	3410	3680	3460	3730	3460	3730	1860	2507	3310	3580	3360	3630	3360	3630	1990	2437	3240	3510	3290	3560	3290	3560
11		1870	2867	3670	3940	3720	3990	3720	3990	2040	2757	3560	3830	3610	3880	3610	3880	2190	2677	3480	3750	3530	3800	3530	3800
12		2040	3127	3930	4200	3980	4250	3980	4250	2230	3007	3810	4080	3860	4130	3860	4130	2390	2907	3710	3980	3760	4030	3760	4030
13		2210	3387	4190	4460	4240	4510	4240	4510	2410	3257	4060	4330	4110	4380	4110	4380	2590	3147	3950	4220	4000	4270	4000	4270
14		2380	3647	4450	4720	4500	4770	4500	4770	2600	3507	4310	4580	4360	4630	4360	4630	2780	3387	4190	4460	4240	4510	4240	4510
15		2550	3907	4710	4980	4760	5030	4760	5030	2780	3747	4550	4820	4600	4870	4600	4870	2980	3627	4430	4700	4480	4750	4480	4750
16		2720	4167	4970	5240	5020	5290	5020	5290	2970	3997	4800	5070	4850	5120	4850	5120	3180	3867	4670	4940	4720	4990	4720	4990
17		2890	4437	5240	5510	5290	5560	5290	5560	3160	4247	5050	5320	5100	5370	5100	5370	3380	4097	4900	5170	4950	5220	4950	5220
18		3060	4687	5490	5760	5540	5810	5540	5810	3340	4497	5300	5570	5350	5620	5350	5620	3580	4337	5140	5410	5190	5460	5190	5460

Other RAL colours available on demand (+2% of price, +2 weeks of delivery time)

VARIANT WITH ONE-SIDED RAILING

LOWER PRICES UP TO 33%

PRICE LIST IN GBP

Step width ^w	800				900				1000				1100				1200				Additional handrail		
	Step filling		Welded grating		Profiled grating		Welded grating		Profiled grating		Welded grating		Profiled grating		Welded grating		Profiled grating		Welded grating				
	Step type	internal	external	internal	external	internal	external	internal	external	internal	external	internal	external	internal	external	internal	external	internal	external	internal	external	internal	external
Number of steps	2	264*	284*	298*	318*	277*	298*	341*	362*	290*	312*	360*	382*	304*	326*	379*	401*	346*	369*	390*	412*	-	-
	3	394	431	434	471	411	449	497	534	428	467	522	560	446	485	547	586	507	547	560	600	-	-
	4	454	494	500	540	475	516	582	623	497	538	613	655	518	561	645	687	598	641	661	704	-	-
	5	531	576	584	629	557	603	685	731	583	629	722	769	609	656	760	808	707	755	779	827	51	58
	6	610	663	670	722	640	694	789	843	670	725	834	888	701	756	878	933	818	874	900	955	61	72
	7	696	754	762	820	733	792	903	962	770	830	956	1016	807	868	1009	1071	946	1008	1037	1099	61	72
	8	763	827	836	899	804	869	996	1060	845	911	1055	1121	887	953	1115	1182	1044	1112	1145	1213	69	83
	9	844	913	923	992	890	959	1103	1172	935	1006	1168	1239	981	1053	1234	1306	1157	1230	1267	1340	73	87
	10	921	996	1006	1081	970	1047	1205	1281	1021	1098	1277	1355	1071	1150	1350	1429	1273	1355	1392	1474	73	87
	11	1043	1131	1134	1222	1097	1186	1352	1441	1151	1241	1431	1521	1206	1298	1511	1603	1427	1521	1555	1649	82	96
	12	1102	1195	1200	1293	1160	1254	1437	1531	1225	1322	1529	1626	1284	1382	1614	1713	1518	1617	1655	1755	90	107
	13	1183	1284	1287	1389	1252	1356	1550	1654	1315	1420	1641	1747	1378	1484	1733	1840	1637	1746	1784	1893	94	111
	14	1246	1353	1357	1464	1312	1421	1631	1740	1379	1489	1729	1839	1453	1566	1835	1947	1724	1838	1881	1995	94	111
	15	1322	1439	1440	1557	1393	1511	1734	1852	1465	1584	1838	1957	1543	1665	1950	2071	1833	1956	1999	2122	99	116
	16	1381	1503	1506	1628	1457	1580	1818	1942	1539	1665	1936	2061	1615	1742	2047	2174	1930	2060	2106	2235	107	127
	17	1469	1601	1600	1732	1556	1690	1939	2073	1636	1771	2055	2191	1722	1860	2180	2318	2050	2189	2235	2374	111	131
	18	1532	1670	1670	1807	1616	1755	2020	2159	1700	1841	2144	2284	1791	1934	2275	2417	2138	2282	2332	2476	111	131

*Variants without railings

VARIANT WITH TWO-SIDED RAILING

Number of steps	2	264*	284*	298*	318*	277*	298*	341*	362*	290*	312*	360*	382*	304*	326*	379*	401*	346*	369*	390*	412*	-	-
	3	466	518	506	558	483	536	568	621	500	554	594	647	518	572	619	673	579	634	632	687	-	-
	4	527	583	574	630	549	605	656	712	571	628	687	744	592	650	719	776	672	731	735	793	-	-
	5	623	686	676	739	649	712	777	840	675	739	814	879	700	766	852	917	799	865	871	937	51	58
	6	724	799	783	859	754	830	903	979	784	861	947	1024	814	892	991	1069	932	1010	1013	1092	61	72
	7	811	892	877	958	847	930	1018	1100	885	968	1071	1154	922	1006	1124	1209	1060	1146	1151	1237	61	72
	8	887	978	960	1050	928	1020	1120	1211	970	1062	1180	1272	1011	1104	1239	1332	1169	1263	1269	1363	69	83
	9	984	1082	1063	1161	1029	1128	1242	1341	1075	1175	1308	1408	1120	1221	1374	1475	1297	1399	1406	1509	73	87
	10	1062	1167	1147	1252	1111	1217	1345	1452	1162	1269	1418	1525	1212	1320	1491	1599	1414	1525	1533	1644	73	87
	11	1213	1338	1305	1430	1267	1393	1523	1648	1322	1449	1601	1728	1371	1498	1676	1803	1597	1728	1726	1857	82	96
	12	1274	1404	1372	1502	1332	1463	1609	1740	1397	1531	1701	1834	1456	1591	1786	1921	1690	1826	1827	1964	90	107
	13	1376	1518	1481	1623	1445	1589	1743	1887	1508	1654	1834	1980	1571	1718	1927	2074	1830	1979	1977	2127	94	111
	14	1437	1585	1549	1696	1504	1653	1823	1972	1571	1721	1921	2071	1645	1798	2026	2179	1916	2070	2073	2227	94	111
	15	1533	1694	1651	1812	1604	1767	1945	2107	1676	1839	2049	2212	1754	1920	2161	2327	2044	2211	2210	2377	99	116
	16	1594	1760	1718	1885	1669	1837	2031	2199	1752	1922	2148	2318	1827	1999	2259	2431	2143	2317	2318	2492	107	127
	17	1704	1885	1835	2016	1790	1974	2173	2357	1870	2055	2290	2475	1957	2144	2414	2602	2284	2473	2469	2658	111	131
	18	1765	1952	1903	2090	1849	2037	2253	2441	1933	2123	2377	2566	2024	2216	2507	2699	2371	2564	2565	2758	111	131

*Variants without railings

Nett prices in GBP. Price list valid from 01.03.2023 until further notice.

VARIANT WITH ONE-SIDED RAILING

LOWER PRICES UP TO 33%

PRICE LIST IN GBP

Step width ^w	800				900				1000				1100				1200				Additional handrail		
	Step filling		Welded grating		Profiled grating		Welded grating		Profiled grating		Welded grating		Profiled grating		Welded grating		Profiled grating		Welded grating				
	Step type	internal	external	internal	external	internal	external	internal	external	internal	external	internal	external	internal	external	internal	external	internal	external	internal	external	internal	external
Number of steps	2	549*	608*	622*	681*	577*	637*	705*	765*	606*	666*	746*	806*	708*	767*	885*	944*	828*	888*	909*	970*	-	-
	3	607*	668*	666*	727*	639*	701*	789*	850*	672*	735*	835*	898*	778*	840*	981*	1043*	917*	980*	1008*	1071*	-	-
	4	701	773	767	839	738	811	908	981	775	849	961	1035	892	966	1120	1194	1049	1125	1150	1225	-	-
	5	777	854	849	926	818	896	1009	1087	859	938	1069	1148	977	1054	1230	1308	1153	1232	1263	1342	51	58
	6	861	946	940	1024	906	992	1119	1205	952	1039	1185	1272	1069	1154	1348	1433	1264	1350	1383	1469	61	72
	7	920	1008	1006	1093	970	1058	1204	1292	1019	1109	1276	1365	1143	1232	1448	1537	1358	1447	1486	1576	61	72
	8	987	1080	1079	1172	1041	1135	1297	1391	1095	1190	1375	1470	1223	1318	1554	1648	1456	1552	1594	1690	69	83
	9	1060	1158	1159	1257	1118	1217	1395	1494	1177	1277	1480	1580	1317	1417	1673	1773	1569	1670	1716	1817	73	87
	10	1142	1246	1246	1351	1204	1310	1502	1608	1267	1374	1594	1701	1407	1514	1788	1895	1685	1794	1842	1951	73	87
	11	1264	1381	1375	1492	1330	1449	1649	1768	1398	1517	1747	1867	1551	1673	1958	2080	1841	1964	2007	2130	82	96
	12	1323	1445	1440	1563	1394	1517	1734	1858	1472	1598	1845	1971	1623	1750	2055	2182	1932	2060	2107	2235	90	107
	13	1402	1533	1526	1657	1484	1617	1845	1979	1559	1694	1956	2091	1714	1848	2172	2306	2049	2185	2233	2370	94	111
	14	1470	1607	1600	1737	1549	1687	1932	2070	1629	1769	2049	2188	1791	1931	2274	2414	2137	2278	2331	2473	94	111
	15	1547	1693	1684	1830	1630	1778	2034	2182	1715	1863	2158	2306	1882	2032	2391	2541	2248	2399	2451	2602	99	116
	16	1606	1757	1749	1901	1694	1846	2119	2272	1789	1944	2255	2410	1955	2110	2489	2644	2346	2504	2559	2717	107	127
	17	1685	1846	1836	1997	1784	1948	2231	2395	1877	2042	2367	2532	2058	2225	2618	2784	2461	2629	2684	2851	111	131
	18	1753	1921	1910	2077	1850	2018	2318	2486	1947	2116	2460	2630	2128	2299	2713	2884	2550	2722	2782	2954	111	131

*Variant with railing on a landing only

VARIANT WITH TWO-SIDED RAILING

Number of steps	2	640*	718*	713*	791*	668*	747*	796*	875*	697*	777*	837*	916*	804*	885*	981*	1062*	924*	1006*	1006*	1087*	-	-
	3	698*	778*	757*	837*	730*	811*	880*	961*	763*	845*	926*	1008*	875*	958*	1077*	1160*	1014*	1098*	1104*	1189*	-	-
	4	829	928	894	994	865	966	1036	1137	902	1004	1089	1191	1031	1137	1259	1365	1189	1296	1289	1396	-	-
	5	919	1026	991	1099	960	1068	1151	1260	1001	1111	1211	1320	1122	1232	1376	1486	1299	1409	1408	1519	51	58
	6	1025	1145	1104	1224	1070	1191	1283	1404	1115	1238	1349	1471	1236	1358	1515	1637	1431	1555	1550	1674	61	72
	7	1085	1208	1171	1294	1135	1259	1369	1493	1184	1310	1441	1566	1315	1441	1619	1746	1529	1657	1657	1785	61	72
	8	1162	1294	1254	1386	1216	1349	1471	1604	1270	1404	1549	1684	1404	1540	1734	1870	1637	1774	1775	1912	69	83
	9	1253	1393	1351	1492	1311	1452	1588	1729	1369	1512	1673	1815	1519	1664	1875	2019	1771	1916	1918	2064	73	87
	10	1336	1483	1441	1588	1398	1546	1696	1844	1461	1611	1788	1937	1611	1762	1992	2144	1888	2043	2045	2199	73	87
	11	1488	1654	1599	1765	1554	1722	1874	2041	1622	1790	1971	2140	1787	1961	2194	2368	2077	2252	2243	2419	82	96
	12	1548	1720	1666	1838	1619	1792	1960	2133	1697	1873	2070	2246	1861	2040	2293	2472	2169	2350	2345	2526	90	107
	13	1645	1829	1769	1953	1727	1914	2089	2275	1803	1991	2199	2387	1964	2153	2422	2611	2298	2490	2483	2675	94	111
	14	1712	1901	1843	2032	1791	1982	2174	2365	1871	2063	2291	2483	2040	2234	2523	2718	2386	2582	2580	2776	94	111
	15	1808	2011	1945	2148	1891	2096	2296	2500	1976	2181	2419	2624	2153	2362	2661	2871	2518	2729	2722	2932	99	116
	16	1868	2077	2012	2221	1956	2166	2382	2591	2051	2264	2518	2730	2227	2443	2762	2977	2618	2836	2831	3049	107	127
	17	1973	2196	2123	2347	2072	2298	2519	2745	2165	2392	2655	2882	2355	2586	2915	3146	2758	2990	2981	3213	111	131
	18	2040	2269	2197	2425	2136	2366	2604	2834	2233	2465	2746	2978	2424	2660	3009	3245	2846	3083	3078	3315	111	131

*Variant with railing on a landing only

Nett prices in GBP. Price list valid from 01.03.2023 until further notice.

VARIANTS **LS**, **PS**

LOWER PRICES UP TO 33%

PRICE LIST IN GBP

Step width w	800				900				1000				1100				1200				Additional handrail		
	Profiled grating		Welded grating		Profiled grating		Welded grating		Profiled grating		Welded grating		Profiled grating		Welded grating		Profiled grating		Welded grating				
Step type	internal	external	internal	external	internal	external	internal	external	internal	external	internal	external	internal	external	internal	external	internal	external	internal	external	internal	external	
Number of steps	2	923*	1018*	979*	1074*	952*	1049*	1083*	1180*	981*	1080*	1124*	1223*	1099*	1198*	1279*	1379*	1220*	1321*	1304*	1406*	-	-
	3	983*	1082*	1045*	1144*	1014*	1114*	1166*	1266*	1048*	1149*	1214*	1315*	1169*	1271*	1375*	1477*	1309*	1413*	1403*	1507*	-	-
	4	1159	1286	1228	1355	1190	1316	1364	1490	1228	1356	1417	1545	1368	1501	1600	1733	1519	1650	1623	1754	-	-
	5	1246	1380	1321	1455	1281	1415	1476	1610	1324	1459	1536	1672	1470	1610	1727	1867	1647	1789	1760	1902	51	58
	6	1391	1545	1473	1626	1425	1575	1641	1791	1471	1623	1707	1859	1603	1755	1886	2038	1800	1953	1922	2076	61	72
	7	1452	1608	1540	1696	1489	1643	1727	1880	1540	1695	1800	1955	1696	1857	2004	2165	1911	2074	2043	2206	61	72
	8	1537	1705	1631	1799	1570	1732	1829	1991	1625	1789	1908	2072	1769	1934	2103	2267	2003	2169	2144	2310	69	83
	9	1630	1803	1731	1904	1689	1863	1969	2143	1748	1924	2054	2230	1904	2081	2263	2440	2157	2336	2307	2486	73	87
	10	1713	1892	1821	2000	1776	1957	2077	2258	1840	2023	2170	2353	1996	2180	2380	2565	2274	2462	2434	2622	73	87
	11	1868	2067	1982	2181	1935	2136	2258	2458	2004	2206	2356	2559	2173	2379	2583	2789	2464	2672	2633	2841	82	96
	12	1982	2194	2103	2315	2054	2268	2397	2611	2121	2336	2497	2712	2300	2519	2735	2955	2609	2831	2788	3009	90	107
	13	2076	2300	2203	2427	2159	2386	2523	2751	2235	2464	2635	2864	2406	2636	2867	3097	2741	2974	2929	3162	94	111
	14	2142	2372	2276	2506	2223	2454	2609	2840	2304	2537	2726	2960	2481	2716	2967	3203	2828	3065	3025	3263	94	111
	15	2242	2485	2382	2625	2326	2571	2733	2979	2411	2658	2857	3104	2595	2845	3107	3357	2961	3213	3168	3419	99	116
	16	2324	2575	2470	2722	2413	2666	2841	3095	2509	2766	2978	3235	2690	2949	3228	3486	3082	3344	3298	3560	107	127
	17	2425	2692	2578	2845	2525	2795	2975	3244	2619	2890	3111	3383	2816	3090	3379	3653	3219	3496	3445	3721	111	131
	18	2492	2764	2652	2924	2589	2863	3060	3334	2687	2963	3203	3479	2884	3163	3472	3751	3307	3587	3542	3822	111	131

*Variant with railing on a landing only

VARIANTS **LW**, **PW**

Number of steps	2	-	-	-	-	-	-	-	-	-	-	-	-	-	-	-	-	-	-	-	-	-	
	3	-	-	-	-	-	-	-	-	-	-	-	-	-	-	-	-	-	-	-	-	-	
	4	-	-	-	-	-	-	-	-	-	-	-	-	-	-	-	-	-	-	-	-	-	
	5	1197	1335	1272	1410	1242	1382	1436	1576	1286	1429	1499	1642	1422	1565	1679	1822	1613	1759	1726	1872	51	58
	6	1306	1457	1388	1538	1355	1508	1571	1724	1404	1559	1640	1795	1539	1695	1821	1977	1749	1907	1871	2029	61	72
	7	1367	1520	1455	1609	1420	1576	1657	1813	1473	1631	1732	1891	1615	1774	1923	2083	1844	2006	1975	2137	61	72
	8	1443	1606	1538	1701	1501	1666	1759	1924	1558	1725	1841	2008	1704	1873	2038	2206	1952	2123	2093	2264	69	83
	9	1531	1702	1633	1803	1593	1766	1873	2045	1655	1830	1961	2136	1813	1990	2172	2349	2079	2259	2230	2409	73	87
	10	1614	1791	1722	1899	1680	1860	1981	2161	1747	1929	2076	2258	1905	2089	2289	2473	2197	2385	2357	2545	73	87
	11	1769	1966	1883	2080	1839	2039	2162	2361	1910	2112	2263	2465	2082	2288	2492	2698	2386	2595	2556	2764	82	96
	12	1830	2032	1950	2153	1904	2109	2248	2453	1986	2195	2362	2571	2155	2367	2591	2802	2478	2692	2657	2871	90	107
	13	1923	2138	2051	2265	2009	2227	2374	2592	2088	2309	2488	2708	2261	2483	2722	2944	2610	2836	2798	3024	94	111
	14	1990	2210	2124	2344	2073	2296	2459	2681	2157	2381	2579	2804	2336	2564	2822	3050	2697	2927	2894	3125	94	111
	15	2089	2323	2230	2463	2177	2413	2584	2820	2264	2503	2710	2949	2450	2692	2962	3204	2830	3074	3037	3281	99	116
	16	2150	2389	2297	2535	2241	2483	2670	2911	2340	2585	2810	3055	2524	2772	3062	3309	2929	3181	3146	3397	107	127
	17	2251	2505	2405	2658	2354	2611	2804	3061	2450	2710	2943	3203	2650	2913	3213	3476	3067	3333	3293	3559	111	131
	18	2318	2577	2478	2737	2418	2680	2889	3151	2519	2783	3035	3299	2718	2986	3306	3574	3154	3424	3389	3659	111	131

Nett prices in GBP. Price list valid from 01.03.2023 until further notice.